

# **Advisen Online Platform Version 10.0 Release Notes**

---

September 2014

Table of Contents

**What's New and Improved ..... 3**

    Loss Benchmarking: Benchmark Analysis for Large Losses (MSCAd) ..... 4

    Benchmark Analysis for Frequency Losses (Federal Dockets) ..... 5

    Filter selections for Large Losses (MSCAd) Composition Analysis ..... 7

    ADVx Enhancements and Addition of CPI Index..... 8

    Employee and Revenue Percent Growth Financial Search Criteria in Prospecting..... 9

## What's New and Improved

Advisen 10.0 includes the introduction of Loss Benchmarking, which enables the comparison of a company's losses against its peers. Highlights of what is new and improved in v. 10 include:

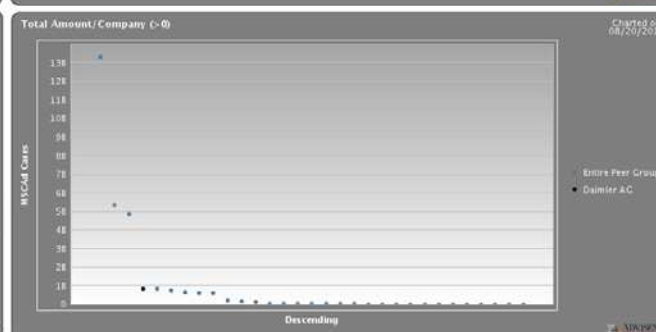
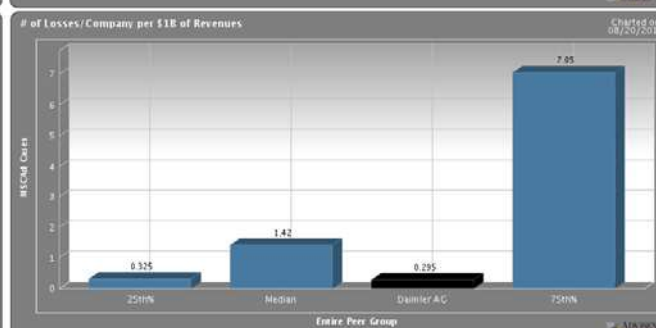
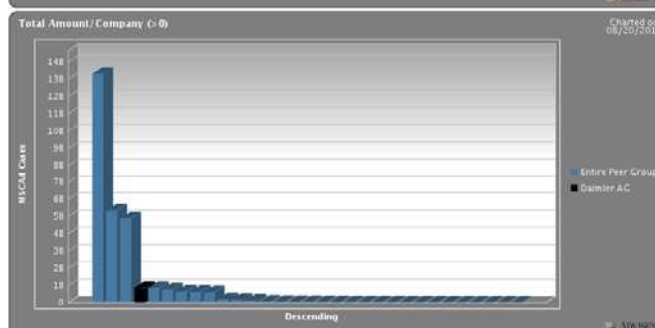
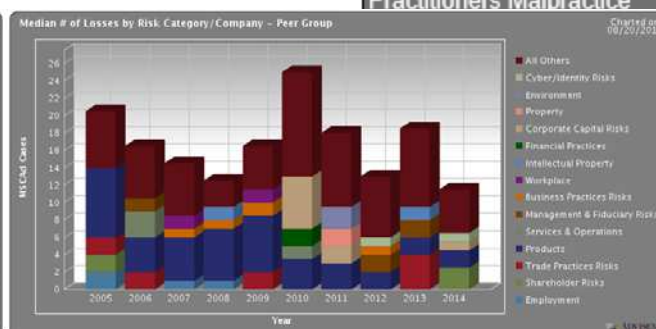
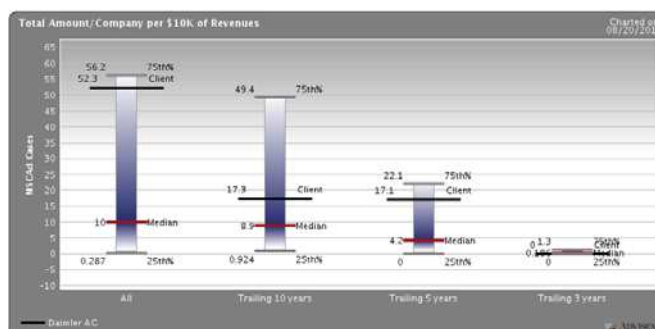
- **NEW! Loss Benchmarking:** Benchmark Analysis for Large Losses (MSCAd) and Frequency Losses (Federal Dockets)
- Filter selections for Large Losses (MSCAd) Composition Analysis
- Consumer Price Index comparative ratio and other enhancements in ADVx
- Employee and Revenue Percent Growth financial search criteria in Prospecting

## Loss Benchmarking: Benchmark Analysis for Large Losses (MSCAd)

Loss Benchmarking is now available for those with a Client Insight Expert, Insured Insight Expert, or Risk Insight license.

- Benchmark Analysis for Large Losses (MSCAd) is a new menu option under the Loss Insight menu
- Ability to compare losses between selected company and its peer group
- Additional charting options to calculate based on company hierarchy or by individual company data.
- New analytic charts that are available for selection – candlestick, stacked bar, line, and scattered charts.

Loss Insight
Composition Analysis
MSCAd Losses
Federal Dockets
CATSCNd Catastrophes
Benchmark Analysis
<b>Large Losses (MSCAd)</b>
Frequency Losses (Dockets)
Loss Analytics
D&O Severity Model (Beta)
Loss Triangle
Loss Target
Retained Loss Summary
Practitioners Malpractice



## Loss Benchmarking: Benchmark Analysis for Frequency Losses (Federal Dockets)

- This is a new menu option accessible under the Loss Insight menu that provides access to Advisen's Federal Dockets database of frequency losses.
- Frequency Losses data are mapped with Coverage and Line of Business
- Frequency losses (federal dockets) can be compared between selected company's hierarchy and its peer companies
- Advanced charting options and flexible functionalities that will give clients a more robust data analysis
- Charts are in 2D view with bright color scheme and crisp appearance

Loss Insight
Composition Analysis
MSCAd Losses
Federal Dockets
CATSCNd Catastrophes
Benchmark Analysis
Large Losses (MSCAd)
<b>Frequency Losses (Dockets)</b>
Loss Analytics
D&O Severity Model (Beta)
Loss Triangle
Loss Target
Retained Loss Summary
Practitioners Malpractice

Loss Data to use: ☒ Large Losses (MSCAd) ☐ Frequency Losses (Federal Dockets)

Benchmark Company: 

Tate & Lyle PLC

Find Company

☐ Include All Hierarchy

What's This?

Select or Add Losses for Benchmark Comparison

Adjust peer group default filters

View Filtered Losses

Select charts and view Benchmarks

Company's Losses

Losses/LOB/Periods

Company

Industry

Peer List

Loss Detail

Chart Options

Show Charts

Reset to Default

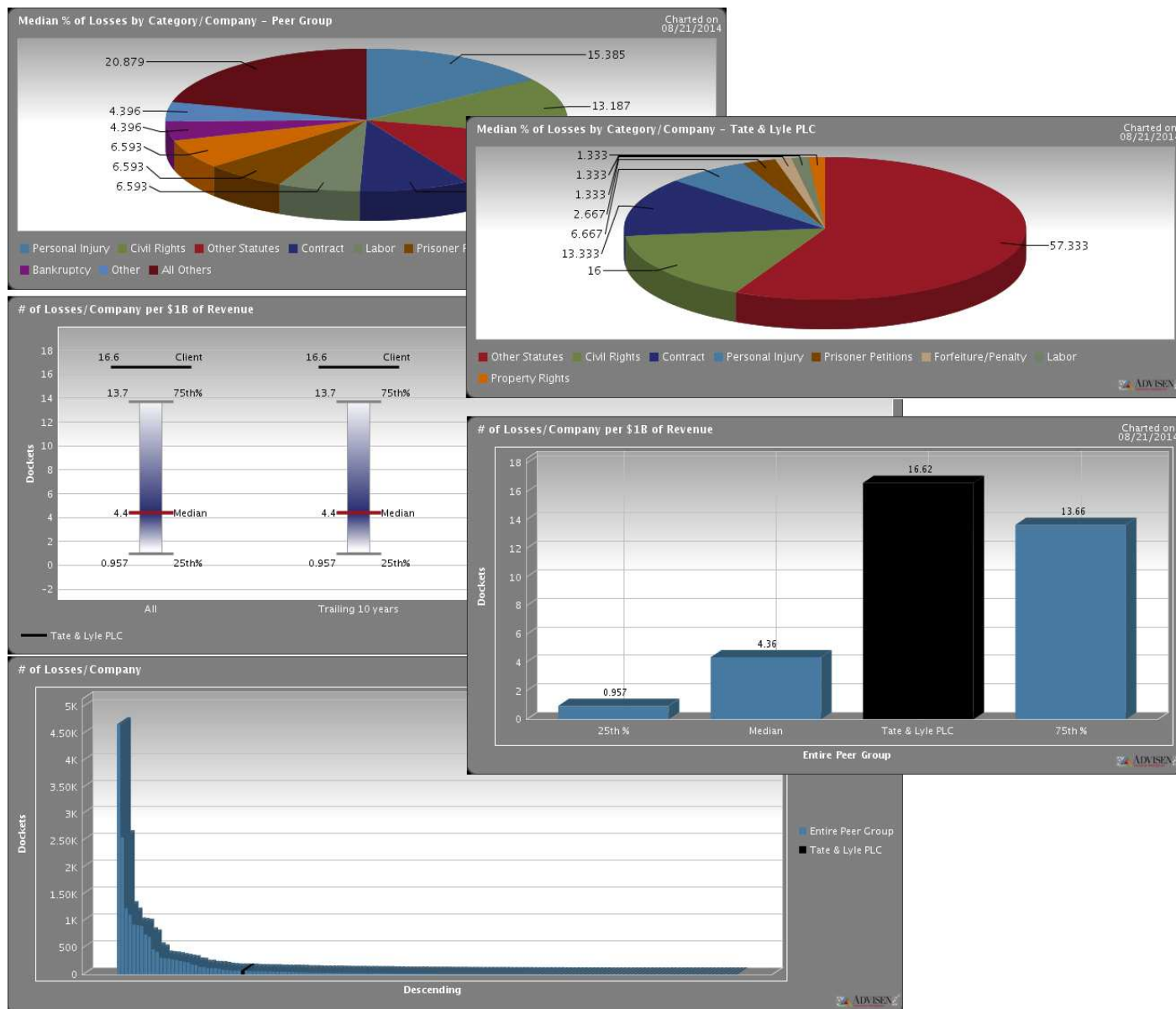
Existing Federal Dockets for Tate & Lyle PLC ☒ Matching peer group filter ☐ All Losses

Showing 1 - 25 of 75

Show Results per Page: 25

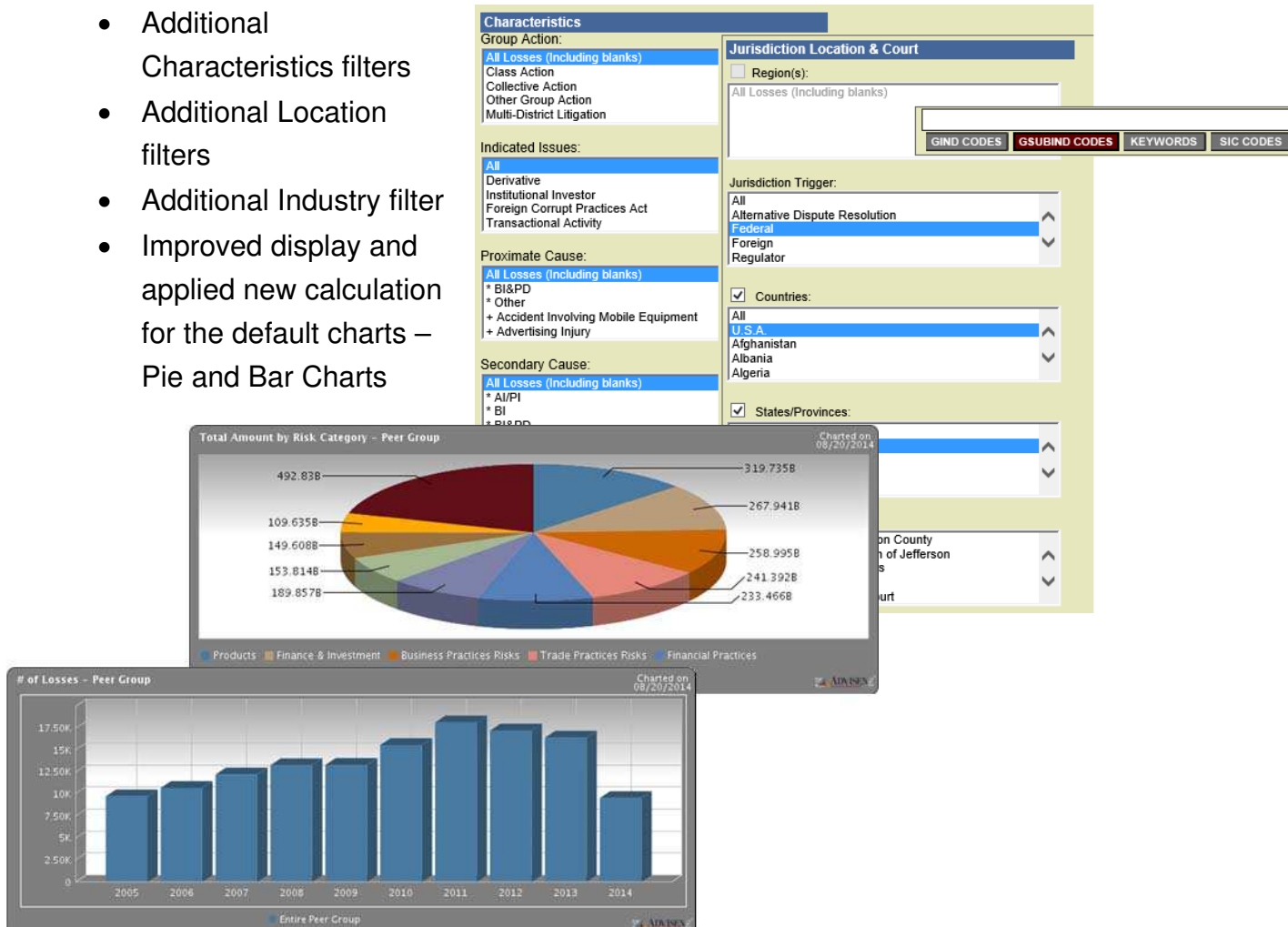
[ 1 2 3 > >> ]

Docket #	Court Name	Title	Category/Type	Most Likely Cov/LOB	Filing Date	Dockets Specific Status	
2012 cv 3952	US District Court for the Northern District of Georgia	Clark V. Tate & Lyle Ingredients Americas Llc	Personal Injury Other Personal Injury	Liability General Liability	11/13/2012	Pending	
2012 cv 109	US District Court for the Middle District of Florida	Hoewischer V. The Palmy, Inc. Et Al	Civil Rights Americans with Disabilities - Other	Liability General Liability	01/30/2012	Pending	
2011 cv 2180	US District Court for the Central Texas Railroad Leasing Company V. Tate & Lyle						
Docket #	Court Name	Title	Category/Type	Most Likely Cov/LOB	Filing Date	Dockets Specific Status	
2010 cv 88	2014 cv 1216	US District Court for the Western District of Washington	Luu V. Trident Seafoods Corporation	Personal Injury Marine	Marine & Aviation Ocean Marine - Collision Liability	08/07/2014	Pending
2010 cv 2194	2014 cv 230	US District Court for the District of Nebraska	Hennessey	Civil Rights Employment	Management Liability Employment Practices	08/07/2014	Pending
2010 cv 2042	2014 cv 318	US District Court for the Eastern District of Kentucky	Mccartt V. Kellogg Usa, Inc. Et Al	Labor Fair Labor Standards Act	Management Liability Employment Practices	08/06/2014	Pending
2010 cv 16	2014 cv 433	US District Court for the Middle District of Florida	Galindo Et Al V. Gerber Product Co. Et Al	Personal Injury Personal Injury - Product Liability	Liability Products Liability	08/05/2014	Pending
2009 cv 562	2014 cv 5972	US District Court for the Southern District of New York	Tradewinds Freight Forwarding, Inc. V. Network Shipping Ltd Et Al	Other Statutes Liability	Liability Pollution/Environ. Liability	07/31/2014	Pending
	2014 cv 89	US District Court for the Southern District of Iowa	United States Department Of Justice V. Archer Daniels Midland Company	Other Statutes Environmental Matters	Liability Pollution/Environ. Liability	07/29/2014	Pending
	2014 cv 2679	US District Court for the Northern District of Texas	Celanese International Corporation V. Ingredion Incorporated	Contract Other Contract	Liability Liability-Other	07/25/2014	Pending
	2014 cv 4468	US District Court for the Eastern District of Pennsylvania	Dinder Et Al V. Stewart Industries, Llc Et Al	Personal Injury Other Personal Injury	Liability General Liability	07/25/2014	Pending
	2014 cv 5829	US District Court for the Central District of California	Roger Scott V. Bimbo Bakeries Usa, Inc. Et Al	Labor Other Labor Litigation	Management Liability Employment Practices	07/25/2014	Pending
	2014 cv 2372	US District Court for the District of Kansas	Richardson V. Kellogg's Et Al	Civil Rights Other Civil Rights (Non-Prisoner)	Other Undetermined	07/24/2014	Pending
	2014 cv 5232	US District Court for the Western District of Arkansas	Tinajero-Frias V. Tyson Foods Inc Et Al	Labor Employee Retirement Income Security Act	Management Liability Fiduciary Liability	07/24/2014	Pending
	2014 at 543	US District Court for the Eastern District of California	Sophamixay V. Kraft Foods Group, Inc. Et Al	Civil Rights Employment	Management Liability Employment Practices	07/23/2014	Pending



## Filter selections for Large Losses (MSCAd) Composition Analysis

- Additional Characteristics filters
- Additional Location filters
- Additional Industry filter
- Improved display and applied new calculation for the default charts – Pie and Bar Charts





## ADVx Enhancements and Addition of CPI Index

- New Consumer Price Index comparative ratio that can be included in ADVx charts
- Users can now select multiple comparative ratios to chart
- ADVx charting options now include Monthly, Quarterly, and Yearly frequency

The screenshot shows the 'Analytics to Graph' interface. On the left, under 'Compare', there is a list of programs: MM - Prof. Liability - Other, MM - Property - Domestic, MM - Real Estate, MM - Umbrella/Excess, and MM - Workers Compensation. Below this is a 'Comparative Ratios' section with options: Combined Ratio, Consumer Price Index (highlighted), Statutory Rate of Return, and Surplus as a Percent of GDP. To the right, 'Your Selections (Select up to 5):' shows 'LM - ADVx Composite' and 'MM - ADVx Composite'. Further right, 'Graph Display Options' includes 'Charts Displayed' (Together selected, Separate unselected) and 'Charting Duration' (Monthly, Quarterly, Yearly selected). A date selector shows years from 2008 to 2014, with 2014 selected. A red '\*NEW' banner is in the bottom right corner.





## Employee and Revenue Percent Growth Financial Search Criteria in Prospecting

- Additional search criteria that will filter results by company's % Growth in its Employees and Revenue
- There are available % Growth ranges and custom range selection for user's preference
- % Growth search criteria can also be limited within 3 years or 5 years period.

☐ ☒ **Growth %**

☐ ☒ **Employees**  
Select a parameter and click the box next to your desired range or input your own values into the Custom Range fields.

☐ 3 Years OR ☐ 5 Years

☐ Up to 5%  
☐ 6% to 10%  
☐ 11% to 15%  
☐ 16% to 20%  
☐ 21% to 30%  
☐ 31% or Greater  
☐ Custom Range:  % to  %

☐ ☒ **Revenues**  
Select a parameter and click the box next to your desired range or input your own values into the Custom Range fields.

☐ 3 Years OR ☐ 5 Years

☐ Up to 5%  
☐ 6% to 10%  
☐ 11% to 15%  
☐ 16% to 20%  
☐ 21% to 30%  
☐ 31% or Greater  
☐ Custom Range:  % to  %