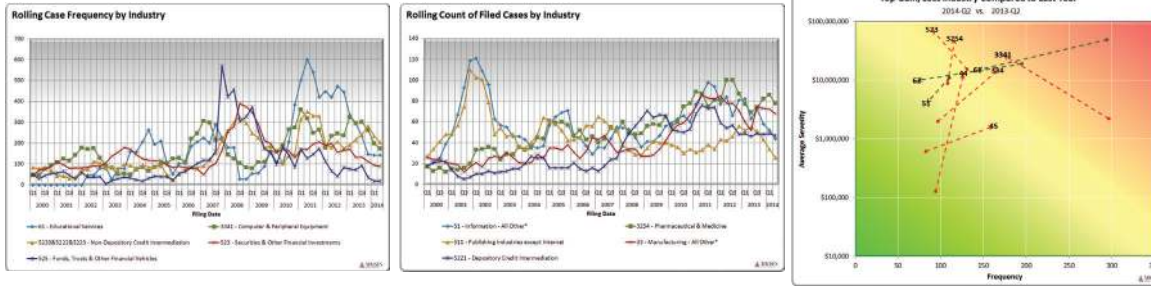


LOSS INSIGHT STRATASCOPE – PUBLIC D&O



- UNDERWRITING EARLY WARNING SIGNS
- INDUSTRY AND ATTACHMENT POINT STRATEGY
- CLAIMS & RESERVING INDICATORS

D&O StrataScope provides multi-dimensional information for underwriting and actuarial leaders to make informed decisions about underwriting and pricing D&O risk for public companies. D&O StrataScope intersects Advisen's industry-leading D&O case data with time series company data to provide insight into current historical D&O case data.

UNDERWRITING BENEFITS

- Employ comprehensive frequency data to enhance risk analysis by type of case and financial impact
- Drive pricing models with ground-up severity data
- Build predictive models for risk scoring with optional model-ready datasets and value-added services

INFORMATION-DRIVEN PERFORMANCE

- Monitor trends in the risk landscape and identify "hot spots" of emerging loss types
- Create peer analyses tailored to industry and size characteristics
- Refine rating plans based on changes in litigation filing and settlement trends

MANAGEMENT REPORTING AND COMMUNICATION

- Promote informed discussions through timely information on claims trends
- Support portfolio analytics with case frequency and severity inputs
- Establish quarterly risk reports & updates

»» WHY STRATASCOPE?

INDUSTRY ANALYSIS

- Which industries have experienced the greatest changes in frequency and severity of loss?
- How can I visualize the differences among industry loss trends?
- Which industries are growing or shrinking in the count of public companies?

LOSS TYPES

- Which types of cases have experienced the biggest change in frequency?
- Which types of cases have experienced the greatest change in severity?
- How does loss severity vary by case type?

ATTACHMENT POINT STRATEGY

- What is the size distribution of losses?
- How has severity been influenced by market capitalization over time?
- What types of losses are most likely to exceed specific attachment points?

D&O STRATASCOPE DATA

Advisen's D&O StrataScope draws on data from our Master Significant Cases and Actions Database (MSCAd) – which contains more than 300,000 global loss cases researched by Advisen. The case data powering StrataScope is recognized as the most comprehensive source of D&O information within the industry.

D&O StrataScope allows cases to be analyzed by:

- Type of case
- Filing and disposition year
- Case status
- Settlement range

The companies experiencing the D&O case can be segmented by:

- Size (market cap range)
- Industry (based on NAICS code)

RELATED PRODUCT

D&O LOSS INSIGHT FEED

Advisen's data feeds provide model-ready loss data, intersected to current and time series business data to enable building of proprietary algorithms and risk dashboards.

The loss data set feed includes:

- D&O cases
- Static company data
- Related case linkages
- Likely line of business
- Parties

The D&O case records include key attributes including the affected company, class period, as well as first notice, filing and disposition dates. Case flags specify whether there is an SEC or DoJ investigation, allegations including GAAP and 10b(5), and whether there was a transaction, IPO or public offering related to the case.

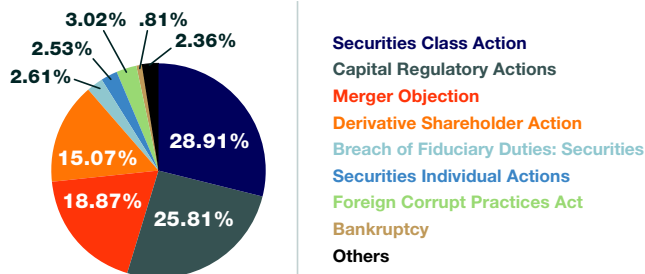
The company data summary file includes counts of companies grouped by the following attributes:

- Industry (based on NAICS code)
- Date
- Revenues
- Geography

About Advisen Ltd.

Advisen is the leading provider of data, media, and technology solutions for the commercial property and casualty insurance market. Advisen's proprietary data sets and applications focus on large, specialty risks. Through Web Connectivity Ltd., Advisen provides messaging services, business consulting, and technical solutions to streamline and automate insurance transactions. Advisen connects a community of more than 200,000 professionals through daily newsletters, conferences, and webinars. The company was founded in 2000 and is headquartered in New York City, with offices in the US and the UK.

D&O Cases by Type



D&O Cases by Industry

